

## 1. PRODUCT AND COMPANY IDENTIFICATION

**Trade name of the product:**

BK-PVC corner molding with mesh 10x15  
BK-PVC corner molding with mesh 10x10

**Distributor information:**

Banja Komerc Bekament DOO  
132 Kralja Petra Prvog Str.  
34304 Banja, Arandjelovac  
Phone 034-6777-500  
fax. 034-6777-505  
e-mail: komercijala@bekament.com

**Contact for creating a product technical sheet:**

e-mail: laboratorija@bekament.com

## 2. DESCRIPTION AND AREA OF APPLICATION

Mechanical protection of the outer edges of thermal insulation facade systems.

## 3. TECHNICAL CHARACTERISTICS

Material: PVC, Facade mesh, Glue

Packaging: Box: 250m, Foil: 125m

PVC: Hardness: 79HSh; Tensile strength: 33Mpa; Elongation at break: 12.5%; Impact toughness according to Charpy: 2.5KJ/m<sup>2</sup>; Stabilizer Ca/Zn

Adhesive: Contact polychloroprene adhesive

Code of the product	Name of the product	L (mm) ±5,00mm	Lm (mm) ±5,00mm	Lmr (mm) ±5,00mm	Lk (mm) ±0,50mm	d (mm) ±0,05mm	Mesh
A15264	BK-PVC corner molding with mesh 10x10	2.500	100	100	21	1,10	145 gr/m <sup>2</sup> EU
A15444	BK-PVC corner molding with mesh 10x15	2.500	100	150	21	1,10	145 gr/m <sup>2</sup> EU

## 4. PREPARATION AND APPLICATION

**STEP 1**

Apply the prepared facade adhesive to the thermal insulation panels that are previously attached to the wall.

**STEP 2**

Press the corner molding with the mesh into the previously applied fresh facade glue.

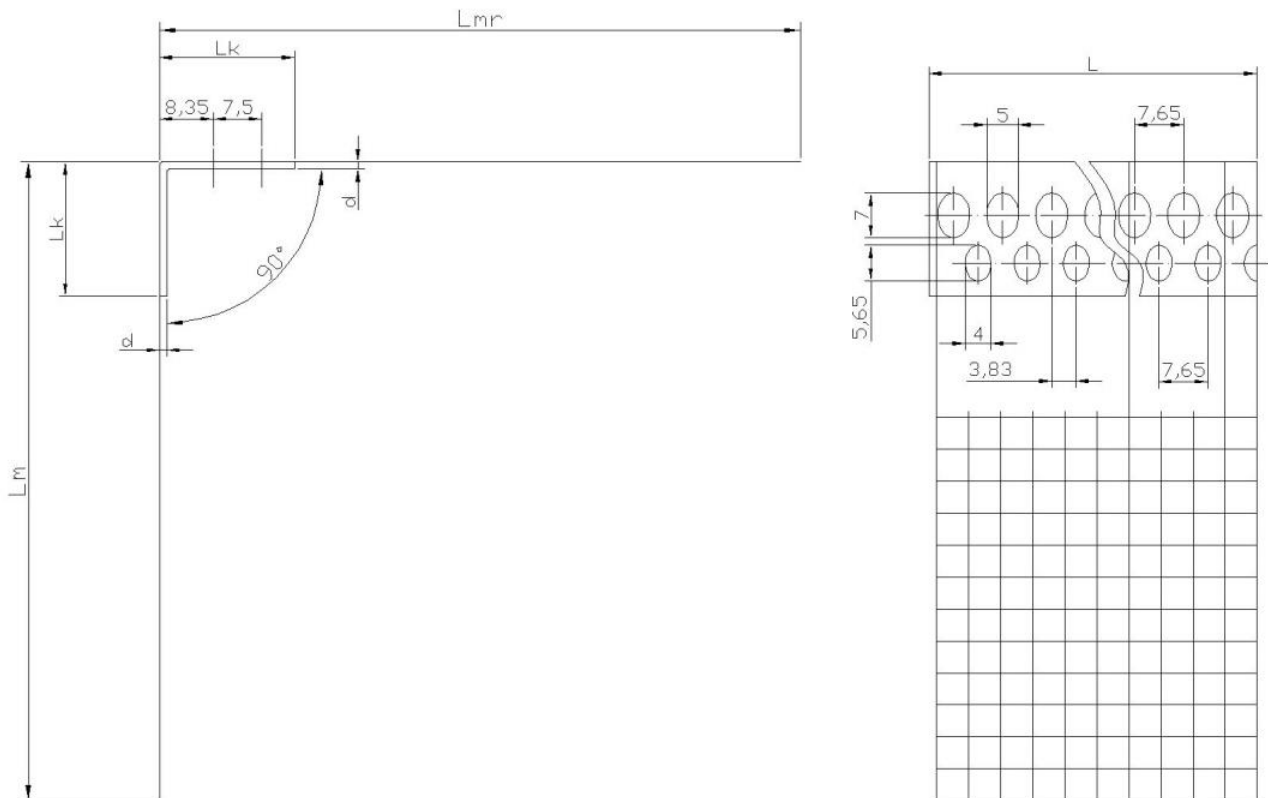
**STEP 3**

The corner molding is correctly installed when it is completely pressed into the facade adhesive.

The assembly (installation) of the corner molding should be carried out at a normal temperature in the range of +5 to +35 ° C. Installation should be carried out by qualified/trained personnel.

**5. HANDLING AND STORAGE**

In a dry place. Do not store directly in the sun.



Date of production: 18.01.2022